



HUMBER
HIGH PERFORMANCE RIBS



CONTENTS

- STANDARD FEATURES
- CONSOLE & ACCESSORIES
- SEATING & ACCESSORIES
- STEERING SYSTEM
- FUEL SYSTEM
- TUBE ACCESSORIES
- HULL & DECK ACCESSORIES
- NAVIGATION FRAMES
- ELECTRICS
- ELECTRONICS
- TRAILERS
- ENGINE INSTALLATIONS



STANDARD FEATURES



Mini double 'D' outer tube rubbing strake



External moulded grab handles x 4
(Positioned at bow and rear of tubes)



External Life lines mounted on safety line holders



Raised bow stowage locker with two
handled access hatch (5.0m only)

CONSOLE & ACCESSORIES



Professional pedestal console with deck compartment
(Requires jockey seat, see options).



One person standard jockey console. Supplied with raised battery shelf and deck level portable fuel tank storage.
Optional 70 litre fuel tank *Excludes windscreen



One person sports jockey console. Supplied with raised battery shelf, smoked perspex windscreen and deck level portable fuel tank storage. Optional 53 litre fuel tank



Two person sports jockey console. Supplied with raised battery shelf, smoked perspex windscreen and deck level portable fuel tank storage. Optional 70 litre fuel tank
*Excludes windscreen



Two person standard jockey console. Supplied with raised battery shelf and deck level portable fuel tank storage.
Optional 70 litre fuel tank



Smoked Perspex windscreen



Horseshoe grab rail
Available in stainless steel or black semi gloss
aluminium



Grab rail straight, stainless steel
22cm



Upgrade to Winged back cushion with side supports.



Optional side cut out for portable fuel tank. Available
on all jockey consoles

SEATING OPTIONS



One person jockey console with underside storage.
External flanges as standard.



Two person standard jockey console with underside storage.
External flanges as standard.



Bench seat, two person with fixed back rest & twin storage compartments



Bow cushion with side tube mounted grab loops

FUEL SYSTEMS



25 Litre portable removable fuel tank



Under console, heavy duty reinforced plastic 70 litres
*Suitable for one person standard, two person standard
and two person sports consoles

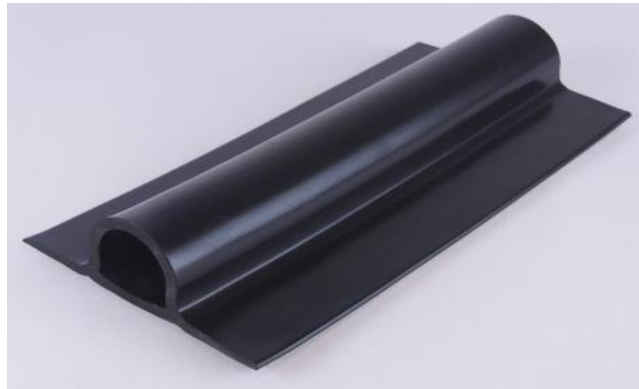


Under console, heavy duty reinforced plastic 53 litres
*Suitable for one person sports console

TUBE ACCESSORIES



Bow jame cleat, vertical D strake & internal U bolt



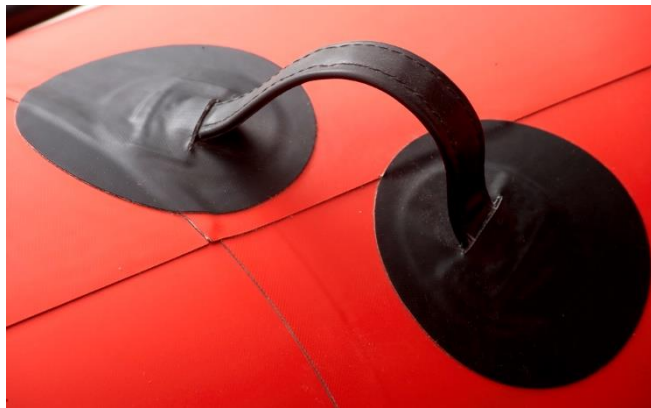
D profile rubbing strake – upgrade from standard outer mini double 'D' strake



D profile strake vertical at bow



Double skin tube top protection on tube straights, positioned inside front and rear life lines



Grab handles, hypalon fabric
(Supplied as pair)



Grab handles, moulded rubber
(Supplied as pair)



Life lines, internally mounted on rear straights of tubes,
2 loops each side



Name badge, hypalon letters mounted on reinforced
backing



Seat wear patches, 50cm x 40cm
Available in Anti-slip or hypalon



Seat wear patches, 23cm x 38cm
Available in Anti-slip or hypalon



Reinforced bow.
Additional strake above and below standard



Two tone Hypalon tubes

HULL & DECK ACCESSORIES



Matting, treadmaster anti-slip diamon design
Pattern varies dependant on deck layout and requirements



Keelguard bow protection, positionef from underside U bolt
1.5m length



Lifting points, heavy duty - 4 off
Suitable for crane lifting *Excludes lifting strop



Sampson post with underside bracing
Available in stainless steel or black semi-gloss aluminium



Tow post, tripod with underside bracing
Available in stainless steel or black semi-gloss aluminium



Dive cylinder rack 4/6 bottles
Available in stainless steel

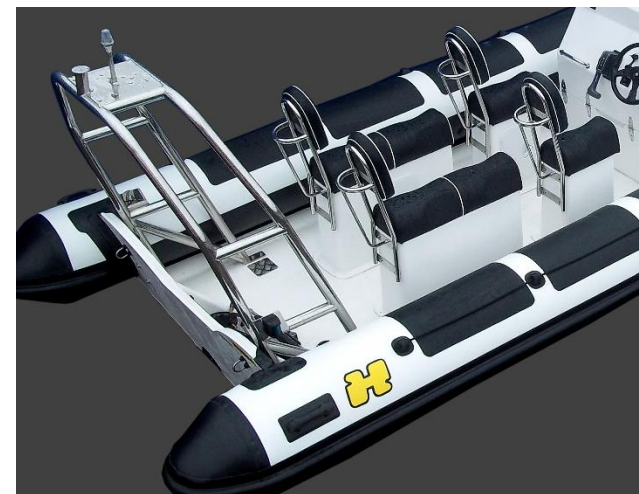
NAVIGATION FRAMES



2" Stainless tube single navigation frame
Suitable for single motor
Available in stainless steel or black semi-gloss aluminium



2" Stainless tube single wide navigation frame
Suitable for single motor with auxillary
Available in stainless steel or black semi-gloss aluminium



2" Stainless tube double navigation frame with high ski/ tow point. Suitable for single motor
Available in stainless steel or black semi-gloss aluminium



Self-Righting frame (Aluminium) with inflation bag, cylinder, valise & fitting head



Dry boxes holders with watertight storage box – 2 off

Flag holder

ELECTRICS



12 volt power socket with plug or twin USB socket



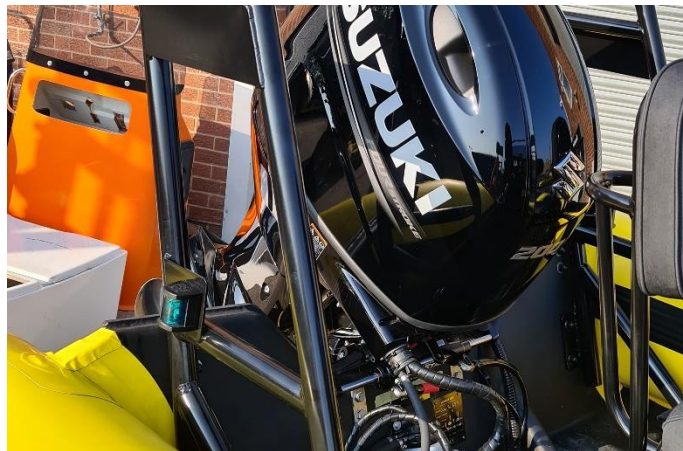
Switch panel, fused waterproof with twin bus bars
(Required for electric items)



LED spot deck light



Waterproof search light, handheld
(requires 12 volt power socket)

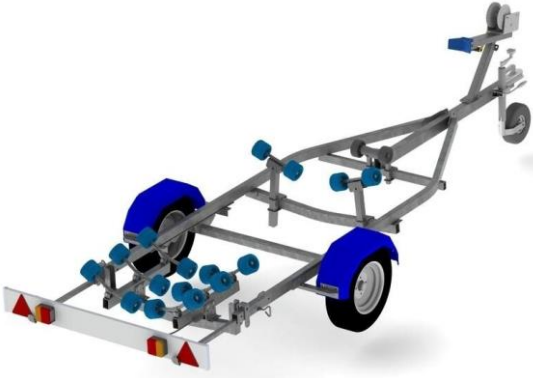


Navigation lights LED
Port, starboard & all round anchor light

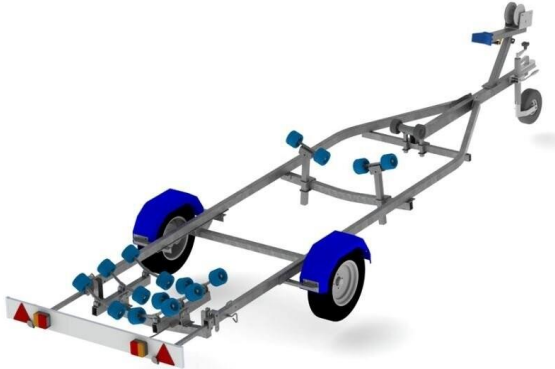


Bilge pump, manual/semi automatic with independent
console mounted switch

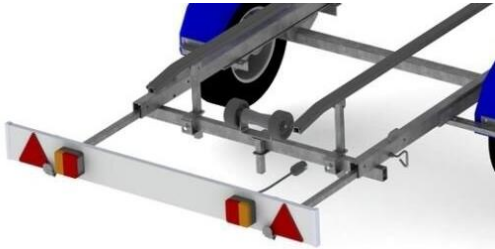
ELECTRICS



N3-750R Unbraked trailer
Suitable for 4.0-4.3m RIBS *Subject to final specification



N4-750R Unbraked trailer
Suitable for 4.5-5.0m RIBS *Subject to final specification



Trailer lighting board
*Supplied as standard with all trailers

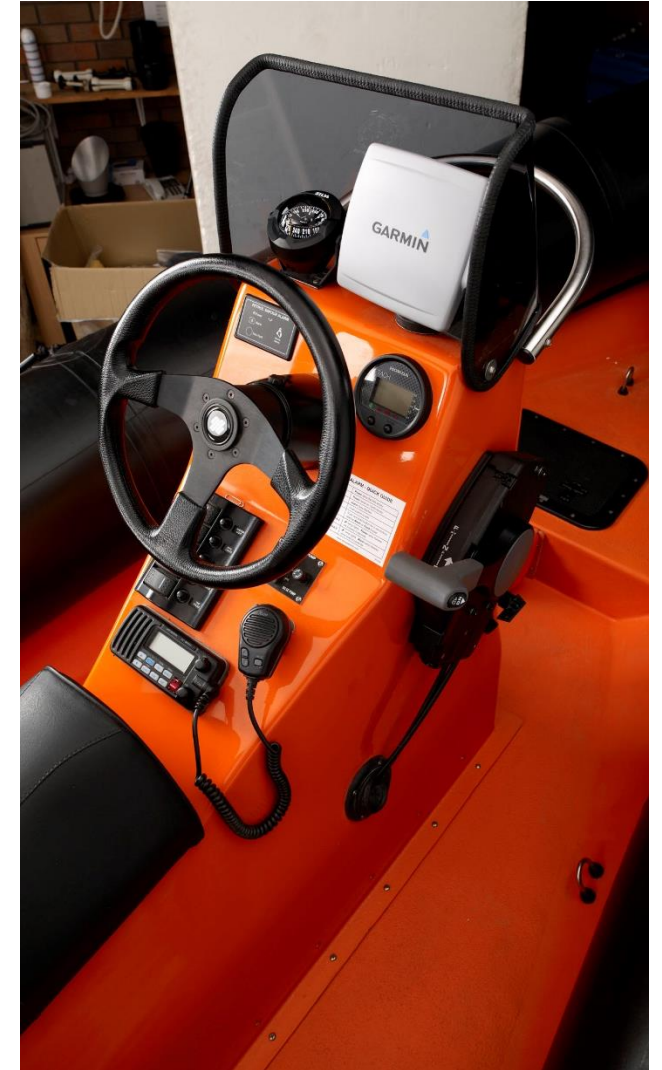
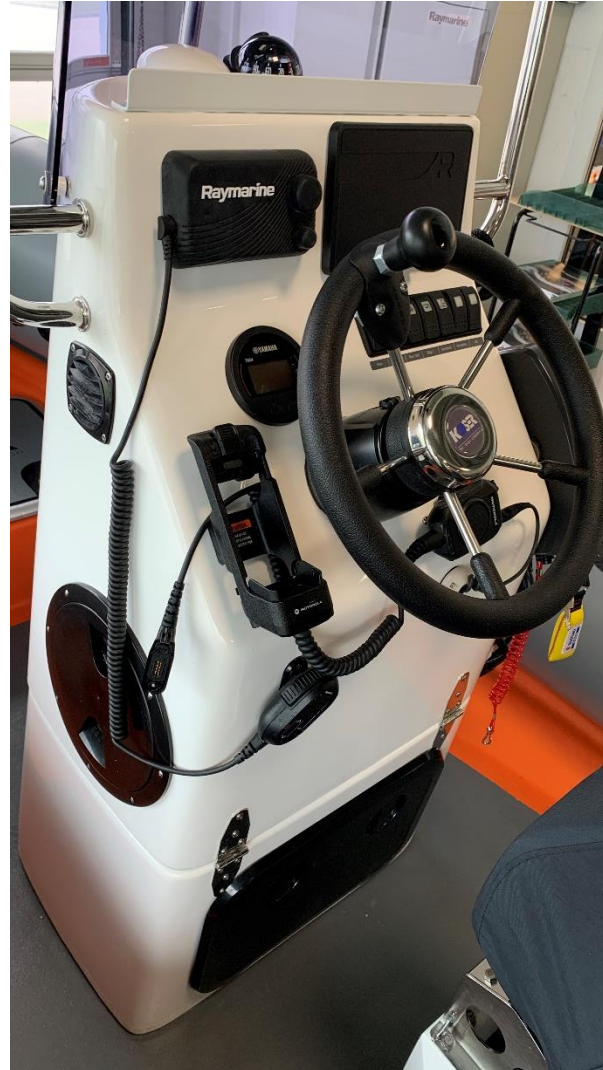


Spare wheel & bracket



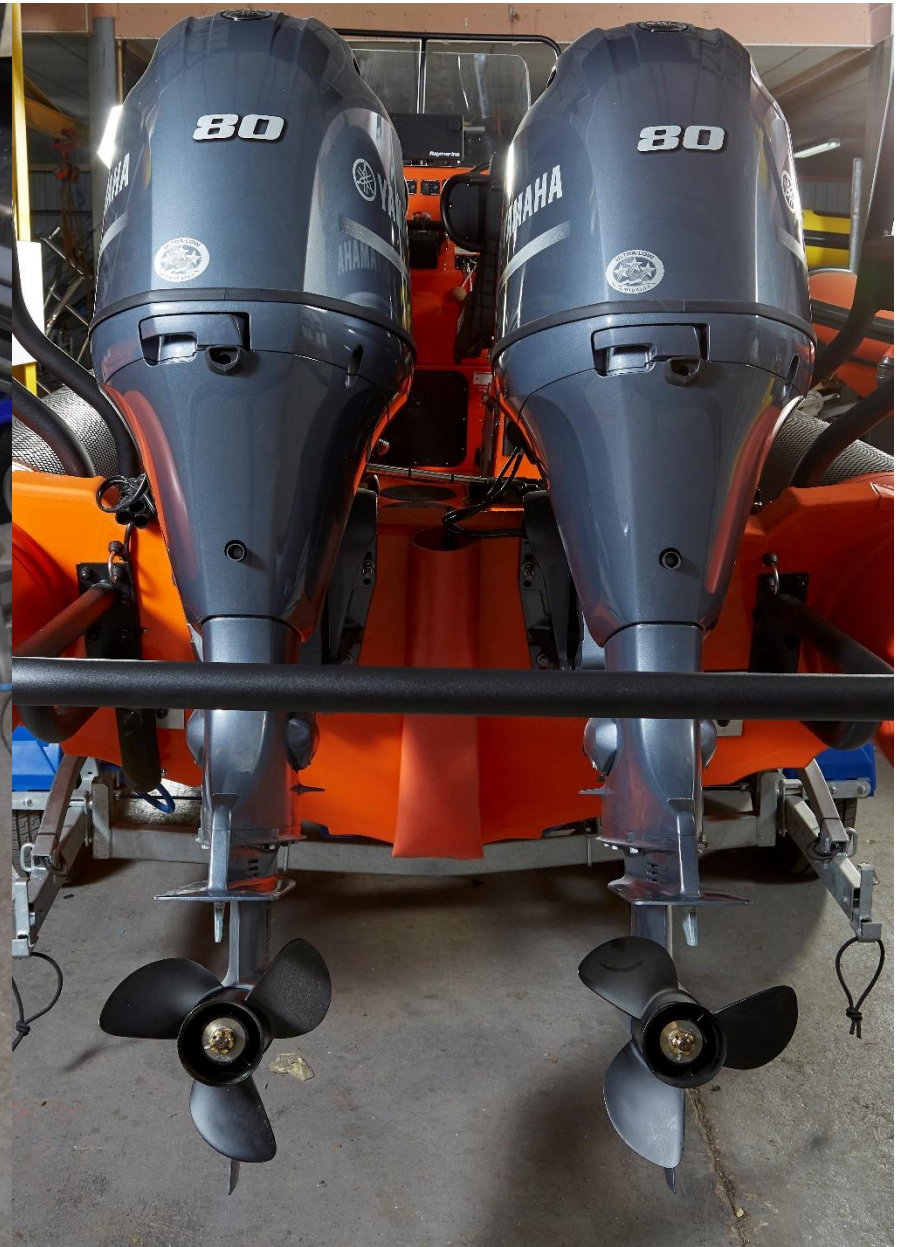
Trailer straps
*Supplied as standard with all trailers

ELECTRONICS



Raymarine & Garmin electronic packages available

OUTBOARD INSTALLATIONS



HUMBER
HIGH PERFORMANCE RIBS